

Client:



Abdul Khaliq Hamza Assali

Consultant:



Abdul Aziz A Bakri
Architects & Interior Designers



Project Name: Tabuk Building

Project no. 0139 - 07

Calculation:

- Lot Area = 7277 SQ,M
- Built up Area = 55,900 SQ,M
- No,of Residential Apart. = 180 Apartments
- Total Area/unit = 233.8 SQ,M
- Total Saleable Area = 42,100 SQ,M
- Total Shop Area = 1500 SQ,M



رياح الأمطار

الرياح
المعاكسة

الصيف
شروق الشمس
5:32 ص
زاوية الشمس
299

الصيف
غروب الشمس
7:04 ص
زاوية الشمس
59

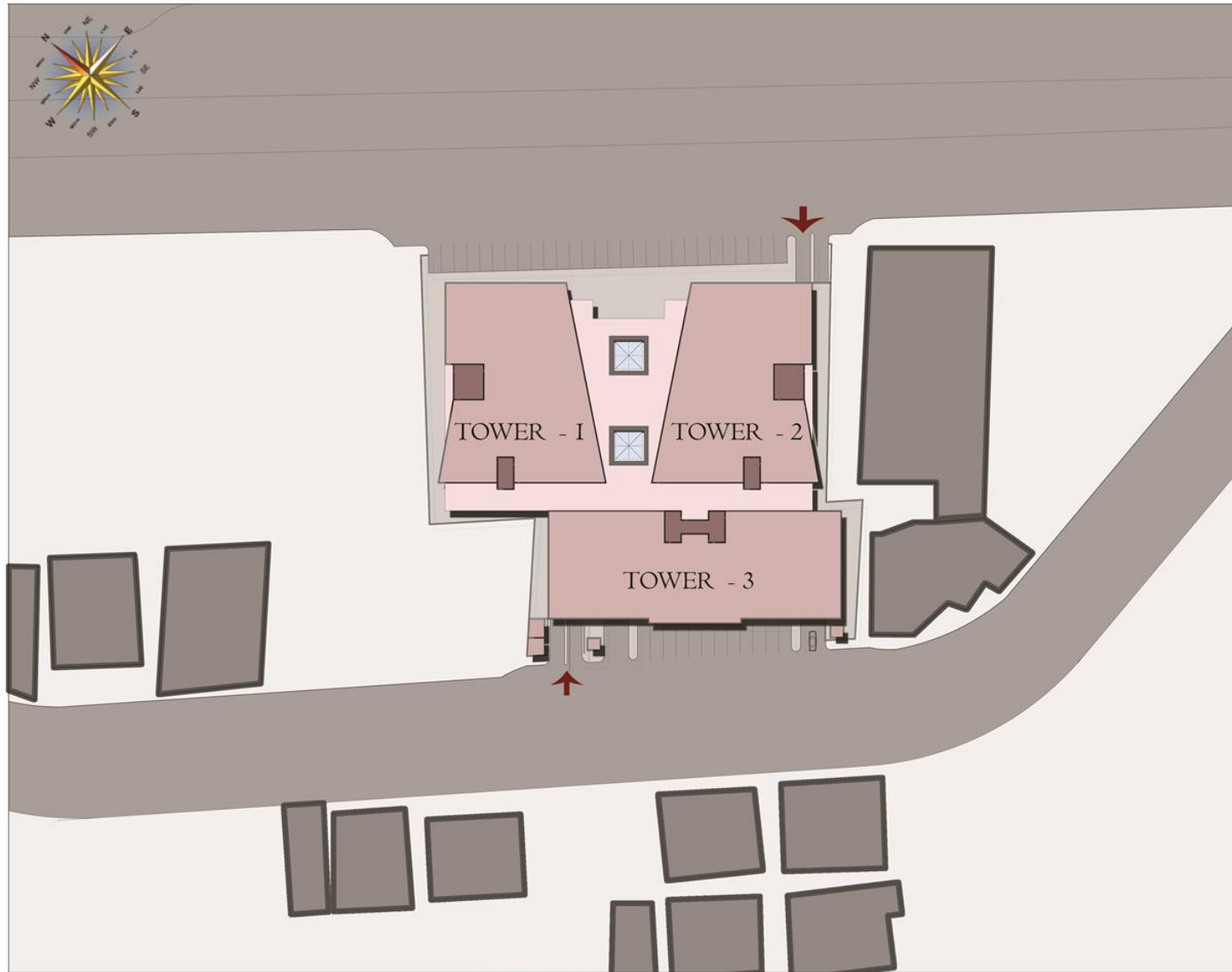
الشتاء
شروق الشمس
6:40 ص
زاوية الشمس
241

الشتاء
غروب الشمس
5:58 ص
زاوية الشمس
119

الرياح
الدائمة

تحليل الشمس والرياح

Site Analysis



Site Plan

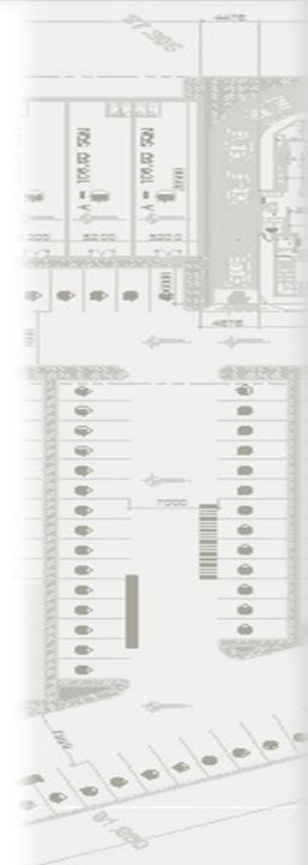


50.000

15 METERS WIDE ROAD

ENTRANCE 2.1 0.00

20 METERS WIDE ROAD

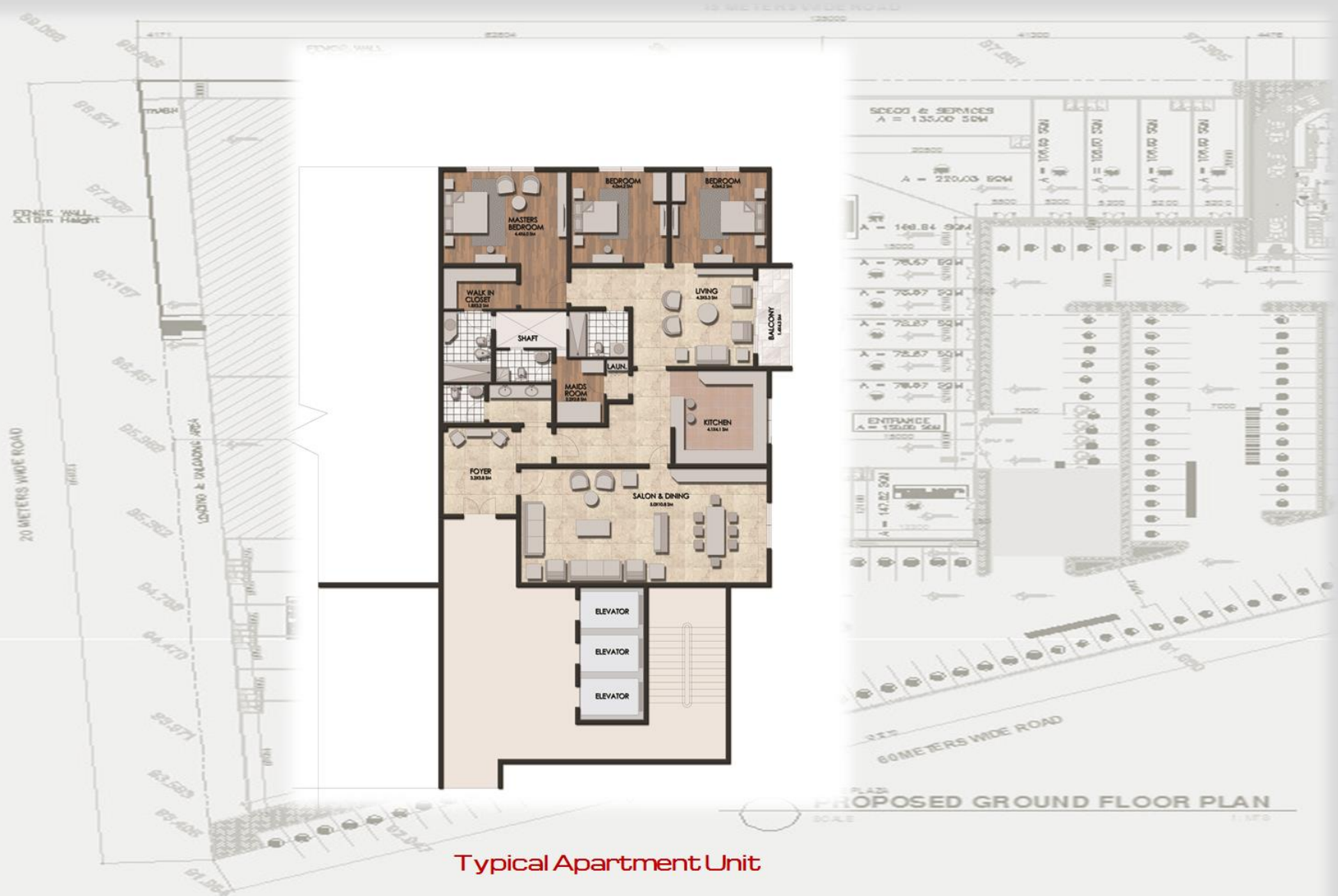


FLOOR PLAN
1 / 150

Ground Floor



Typical Floor



Typical Apartment Unit



Saloon & Dining
Typical Apartment unit



Conceptual Perspective



Location Map





Proposal-2
Typical Floor Apartment



Redefining the Design Standards

Redefining the Architecture & Interiors

A Gate way to the Future of Architecture & Interiors

Thank You



END